

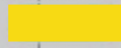
Eliminate Construction Schedule Delays

Feb Mar Apr May June July Aug Sep Oct Nov Dec

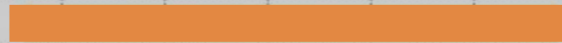
Process 01



Schedule



Process 03



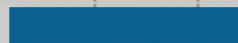
Delays



Process 05



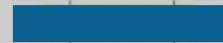
Process 06



Process 07



Process 08



Process 09



Get in Touch: (404) 329-3000

50x

avg customer ROI

\$150K

savings per project

Schedule Optimization Platform™

The SmartPM Schedule Optimization Platform is a complete “intelligent” analytics solution that keeps construction schedules on track and off the path towards disputes by eliminating delays.

Using deep learning and AI, SmartPM analyzes complex schedule data, surfacing actionable insights so construction firms can make better decisions faster, improving project outcomes.

With SmartPM, construction firms can mitigate risk, control project costs, and increase profitability.



Optimize your project schedule effortlessly for better project delivery



Create accurate project schedules with the most complete, authoritative, and up-to-date data



Gain immediate visibility and insight into project schedules across your entire portfolio



Increase profitability by growing revenue and efficiently scaling your business

SmartPM Apartments

Primary Scenario *Originals*
Plan *Extremium*

🕒 50 days late

Current Data Date: **Dec 19, 2018** | Baseline End Date: **Sep 11, 2019** | Current End Date: **Oct 31, 2019**

PROJECT HEALTH



SCHEDULE PERFORMANCE

SPI: 0.634

Planned (67%)

Actual (43%)

98

DAYS

Critical Path Delay

48

DAYS

Future Acceleration

SCHEDULE FEASIBILITY

B

Schedule Quality

6%

Schedule Compression

N/A

Forecasted Completion

📅 Add Schedule

📈 View Trends

☰ Summary Report

📄 SmartPM Report

🗑️ Delete Project

SmartPM's intuitive, one-click analytics dashboards allow construction professionals to successfully manage complex project schedules, equipping them with tools they need to automate schedule analysis, gain visibility into mission-critical schedule data at-a-glance, and generate reports in seconds.

Gain Visibility

Portfolio Dashboard

Monitor schedule performance across your entire project portfolio to keep schedules on track:

- Schedule Performance
- Project Health
- Change Log
- Delay Analysis
- Trend Reports

Reduce Risk

Improve schedule quality and consistency by proactively identifying schedule issues before they become a problem:

- Schedule Compression
- Schedule Quality Analysis
- Quality Editor

Save Time

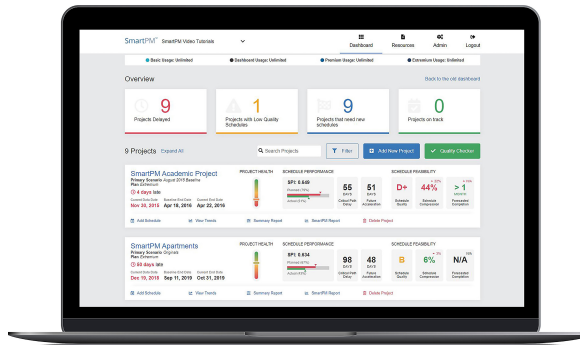
Eliminate time-consuming manual processes by automating analysis, reports and schedule submission processes:

- Auto-Generated Reports
- Automated Delay Analysis

Cut Costs

Reduce schedule delays, cost overruns, and disputes with accurate schedules:

- Schedule Feasibility
- Change Mgmt Log
- What-if Scenarios



99%

Guaranteed Uptime

90%

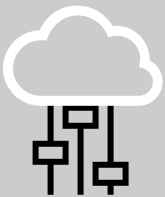
Reduction in Analysis Time

85%

Customer Satisfaction

Fast and Easy to Use

SmartPM's native integrations ensure that users can be up-and-running in minutes, and its intuitive design allows SmartPM to be implemented across your organization within days.



“

Our goal is to be done on time. SmartPM helped us reach our goals. Instead of being two months behind schedule, now we're two months ahead of schedule.

~Pat Tolin, CEO, The MCP Group